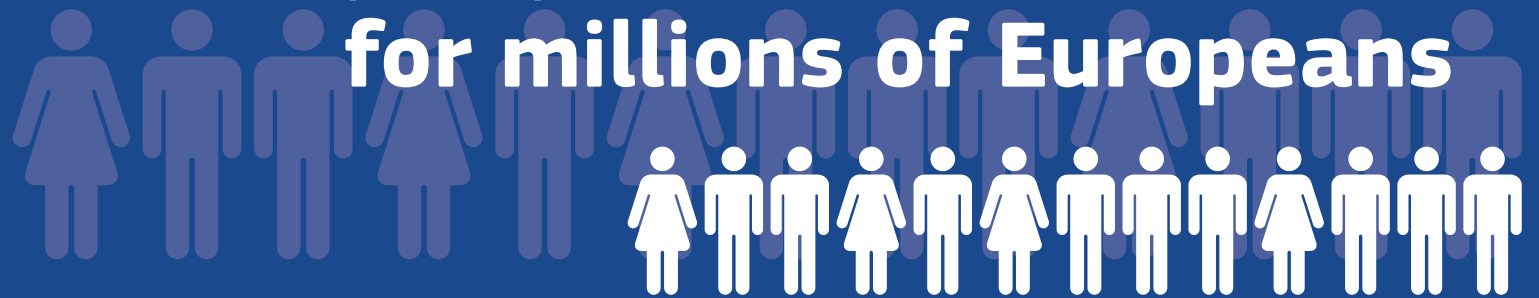


Creating jobs

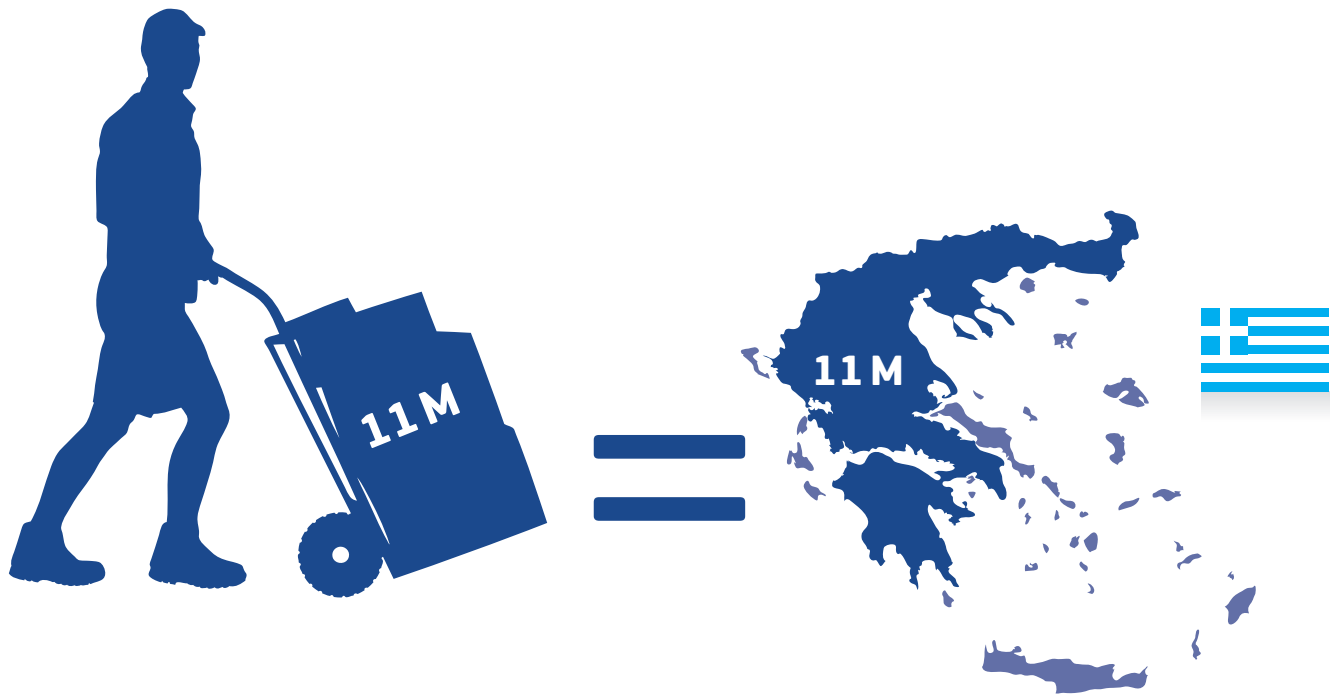
Transport provides work

for millions of Europeans

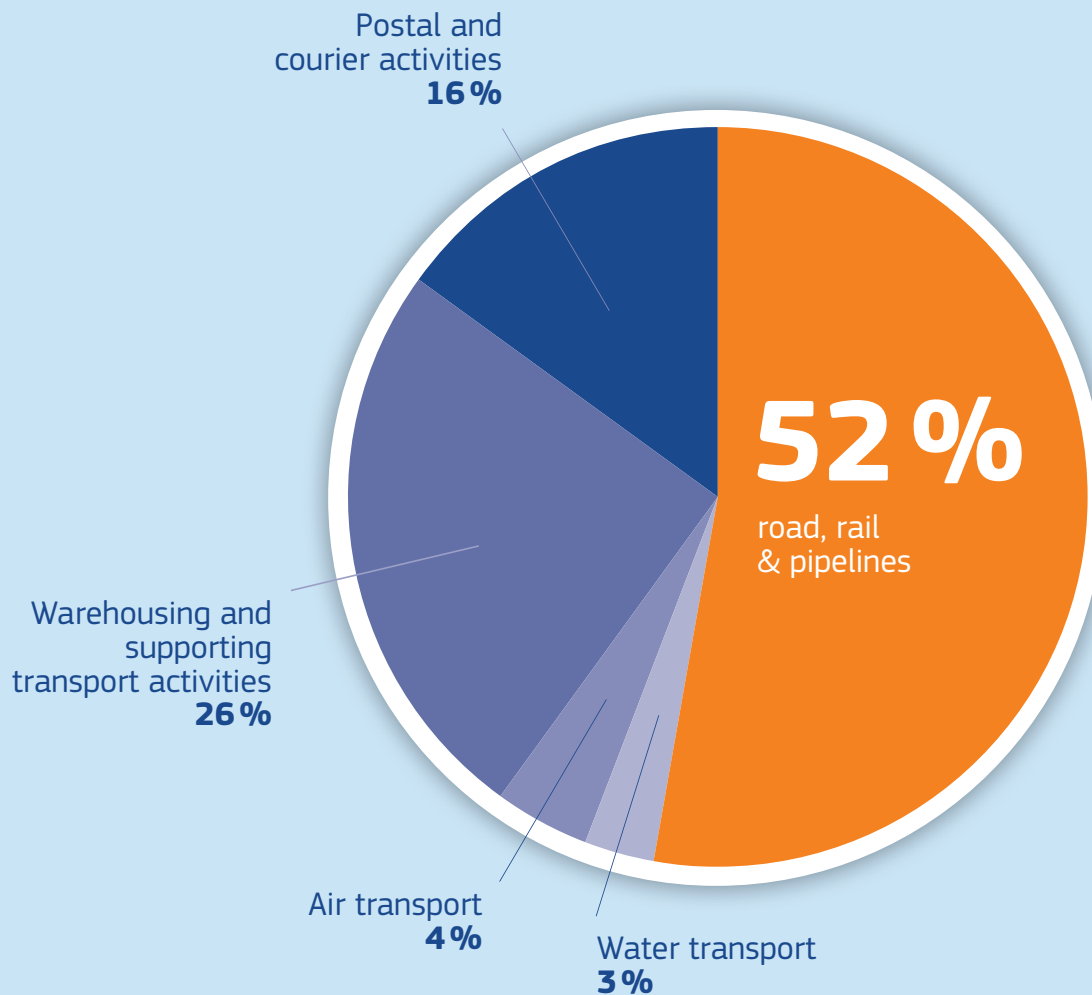


In Europe, **1 out of 20 jobs**
is in the transport sector.

More than **11.4 Million Europeans** work
in transport service-related jobs:
that is almost the population of **Greece!**



More than half of transport service employees work in **land** transport (road, rail and pipelines).



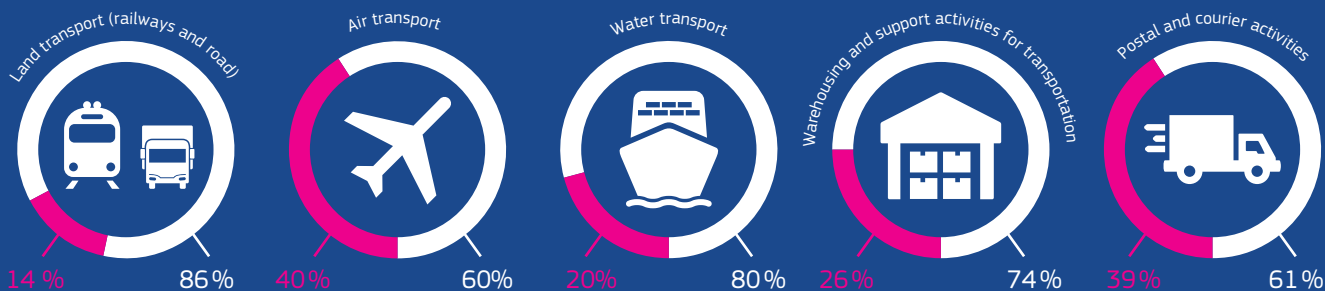
Source: Eurostat Labour Force Survey, 2016

Only **22%** of transport workers are **women!**

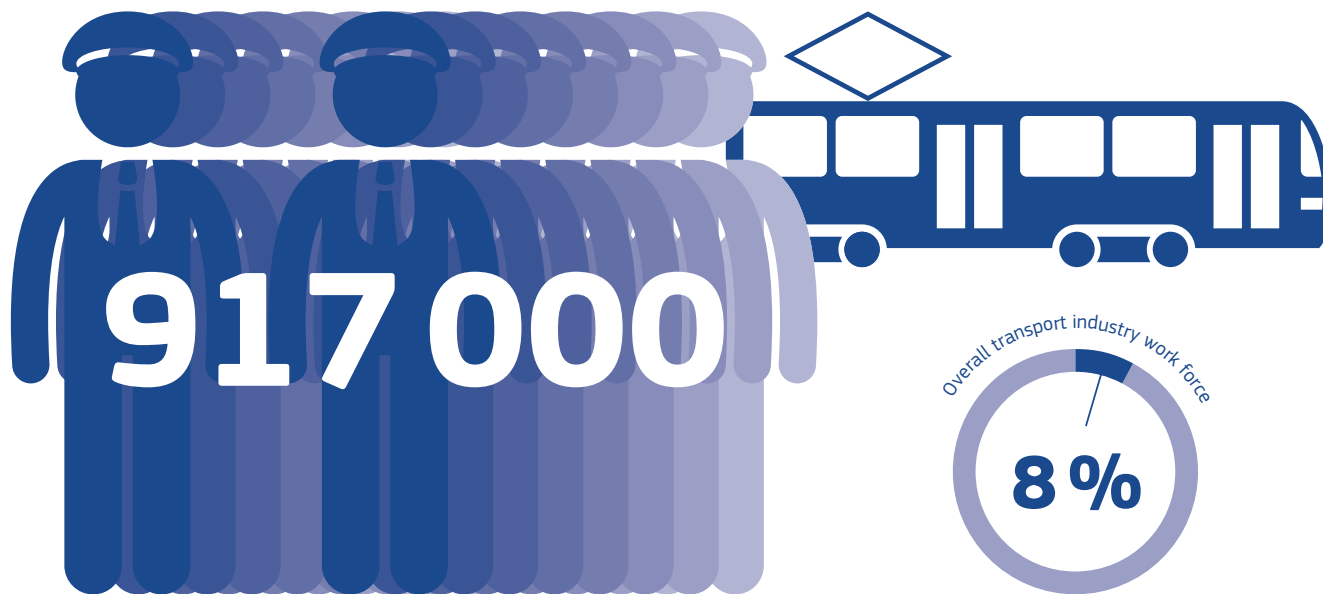
All transport:



Share by gender and transport mode:



Urban and suburban passenger transport employs around **917 000 people**, representing more than the 8% of the overall transport industry work force.



Public transport is one of the largest employers at local level, such as in Amsterdam, Barcelona, Brussels and Dublin.